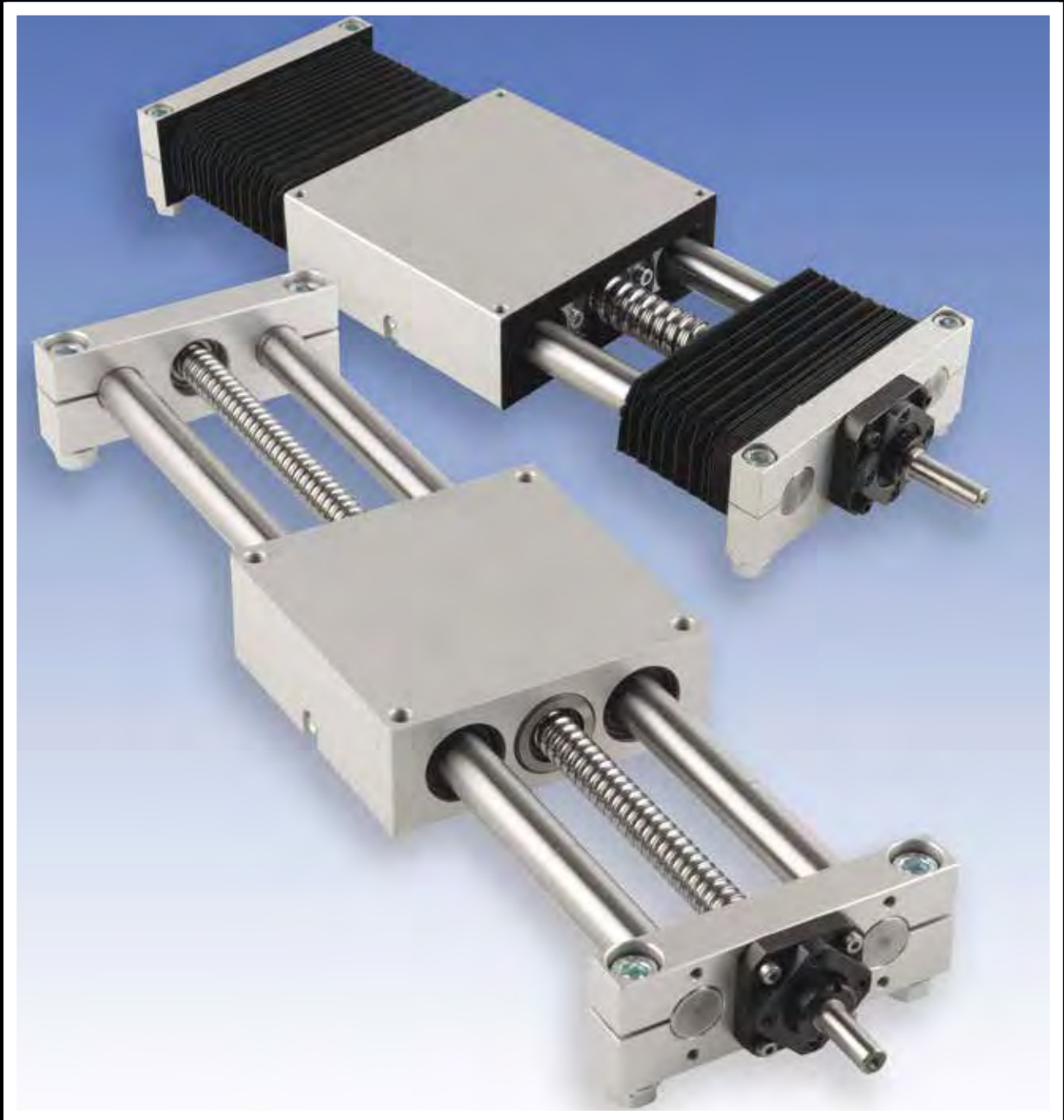


# LINEAR UNIT QME

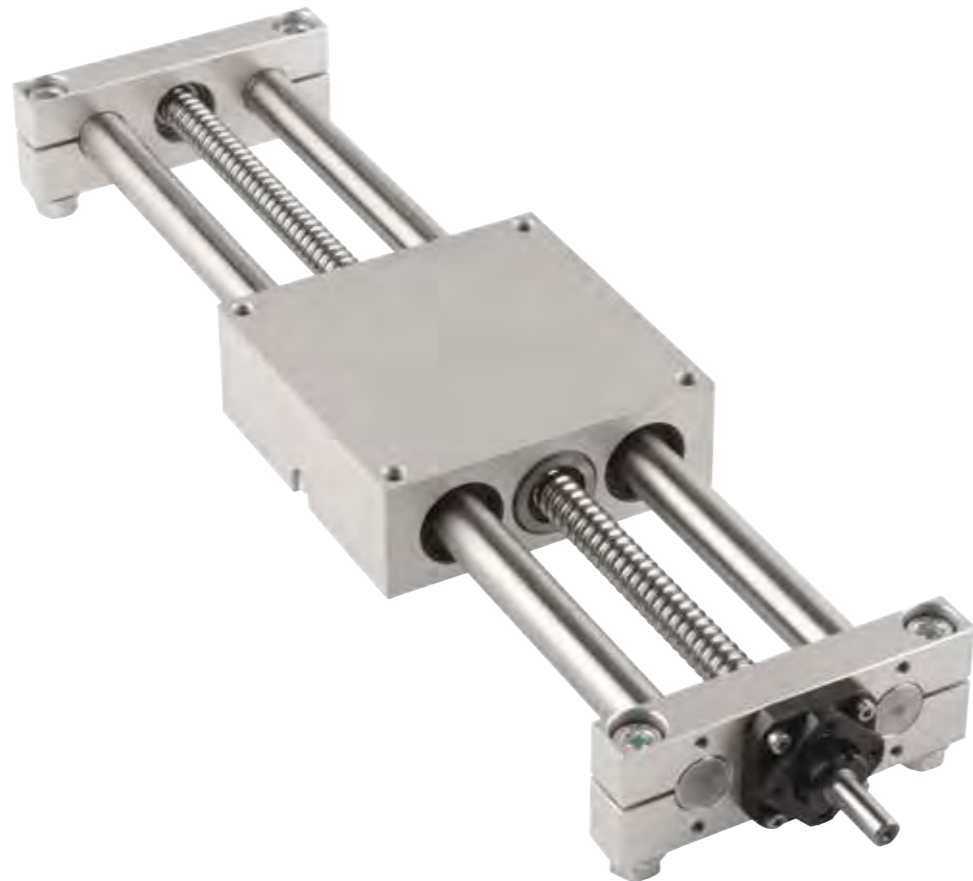


**ROLLCO**

SPECIALIZED  
ON LINEAR MOTION

## Index

Product overview and order code .....	3 - 4
Diagram all types .....	5
Bellow and adjustment wheel .....	6
Product overview .....	7



With the linear table unit from Rollco you can save both time and money. The unit is designed to fulfil the need of an easy to mount unit for medium precision (1/10 mm.) The unit is a ready to mount linear table unit with ball screw or lead screw and ball bushings. Can be supplied as a standard version, with or without bellows, or easily modified according to your need.

- Corrosion resistant version - please contact Rollco.
- Reduced or eliminated clearance between screw-shaft and nut for more accurate stroke - please contact Rollco.
- Self aligning ball bushings are mounted in QME20 and QME30 as a standard to secure that all the balls are in contact with the shaft also if the shaft is slightly bending due to the load.
- Customer designed mounting flange for motor and/or customer designed end-machining of the screw shaft - please contact Rollco.
- For life time calculation we refer to the Ball Screws and Linear Ball Bearings catalogues.

## Order Code

**QME 20 - 360 - 594 - B - W - SR1605**

### Type & shafts

QME

### Size

12 = Hardened steel shaft ø12 + ball bushings LME12UU  
 20 = Hardened steel shaft ø20 + ball bushings SBE20UU  
 30 = Hardened steel shaft ø30 + ball bushings SBE30UU

### Stroke

360 = 360 mm stroke

### Ltot

594 = Ltot as on page 4. Distance between assembly holes.

### Bellow

B = Bellow

Without letter B = without bellow (QME20-360)

Please notice that to reach the same stroke with bellow Ltot is calculated as on page 6

### Adjustment wheel

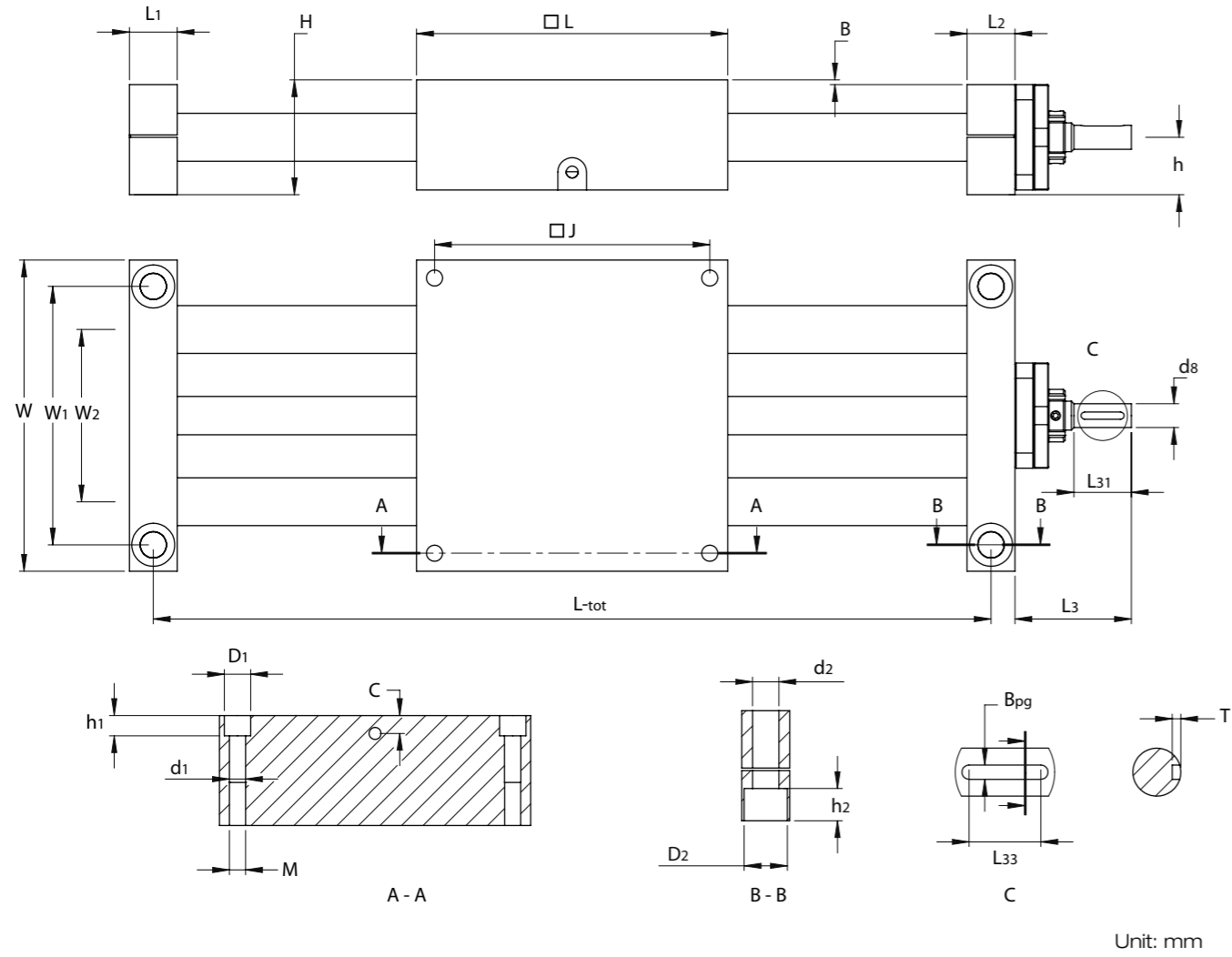
W = Adjustment wheel

Without letter W = without adjustment wheel

### Screw type

SR082,5 Ball Screw for QME12  
 TR1003 Lead Screw for QME12  
 SR1605 Ball Screw for QME20  
 TR1604 Lead Screw for QME20  
 SR3205 Ball Screw for QME30  
 SL3205 Left hand Ball Screw for QME30  
 SR3210 Ball Screw for QME30  
 SR3220 Ball Screw for QME30  
 TR3006 Lead Screw for QME30





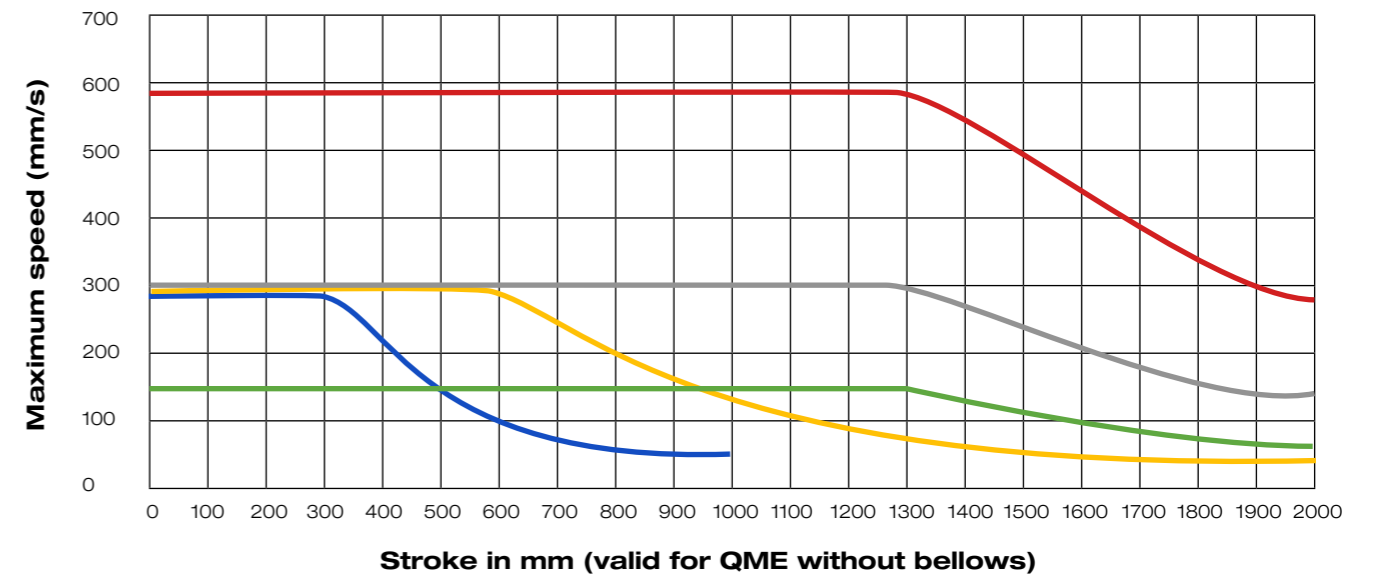
Size	J	B	L	L1	L2	h	H	W	W1	W2	M	C
QME 12	73	1,5	85	12	14	15	31,5	85	73	45	M 6x12	7,5
QME 20	115	2	130	20	20	24	48	130	108	72	M 8x18	7,5
QME 30	184	1	200	22	22	36	71	200	178	130	M 8x18	15

Size	d1xD1xh1	d2xD2xh2	L3	L31	d8	BP9 x L33 x T	L-tot*
QME 12	5,2x10x5,5	5,5x10,7x5,7	23	8	4	no keyway	stroke+98
QME 20	6,8x11x8,5	11x18x13,5	49	25	10	3x18x1,8	stroke+150
QME 30	6,8x11x8,5	13x20x14	80	45	16	5x36x3	stroke+222

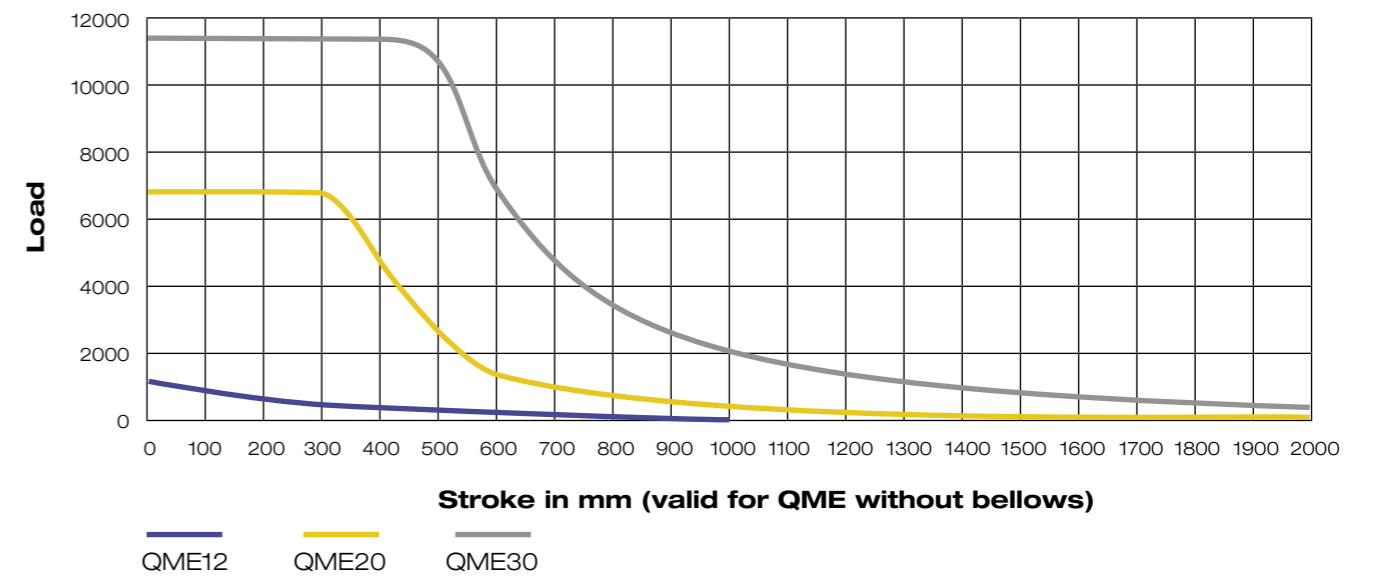
\*We strongly recommend to add minimum 50 mm to the stroke for safety. You can find more details and 3D CAD-files at our homepage.

Maximum speed and stroke - based on different ball screws

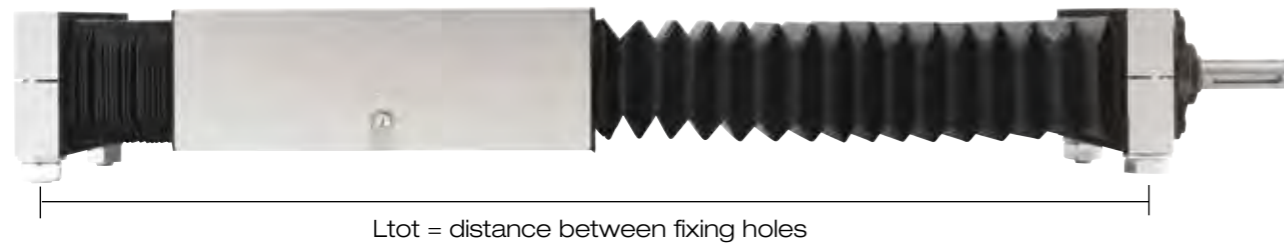


Screw type (diameter x lead)	Ball Screw SR082,5	Ball Screw SR1605	Ball Screw SR3205	Ball Screw SR3210	Ball Screw SR3220
Unit type	QME12	QME20	QME30	QME30	QME30
Fixed weight kg	1,11	3,92	12,54	12,7	12,77
Weight kg/m	2,2	6,4	17,1	16,7	17,1

Maximum static load (N) and stroke



## Bellow

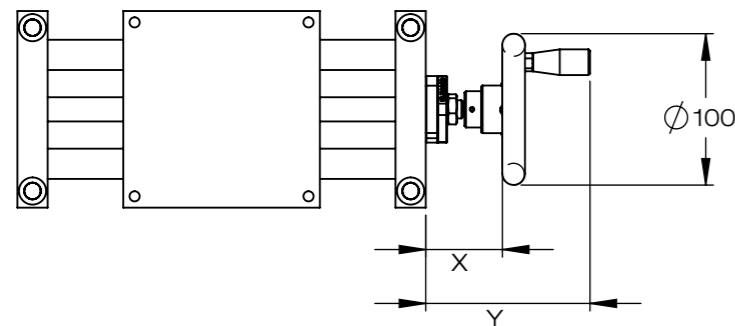


Unit: mm

Size	Designation	Length max fold	Length min fold	Unuseable length	Ltot*
QME12-B	QB12	12,0	1,5	6	$98 + S + (\frac{S}{7} + 6) \cdot 2$
QME20-B	QB20	16,5	1,5	6	$150 + S + (\frac{S}{10} + 6) \cdot 2$
QME30-B	QB30	22,0	1,5	6	$222 + S + (\frac{S}{13,67} + 6) \cdot 2$

\* S = stroke

## Adjustment Wheel



Size	Designation	X	Y
QME12	QW12	38	102
QME20	QW20	46	110
QME30	QW20	52,5	117

Lead screws are available for:

- QME12: Lead screw TR1003
- QME20: Lead screw TR1604
- QME30: Lead screw TR3006

## Product Overview



**BALL SCREWS**  
High efficiency ball screws and nuts.



**LINEAR UNIT QME**  
Complete linear drive unit with ball bushings and ball screws.



**LINEAR UNIT RHL**  
Complete unit with tooth belt.



**LINEAR UNITS**  
Complete unit with ball screw or tooth belt.



**ALUMINIUM PROFILES**  
A full program of aluminium profiles and accessories.



**BELT CONVEYOR**  
Transportation system with different drive options



**U-RAIL**  
Rollers in steel or polyamide. For light, standard or heavy load. Mounted in U-rails.



**COMPACT RAIL**  
No more problems with parallelism. Low noise. Lifetime lubricated bearings.



**C-RAIL**  
A simple and cost effective linear bearing system



**LINEAR RAIL SYSTEM**  
The most standardized linear rail system.



**MINIATURE**  
Range from 3 mm up to 15 mm.



**EASY RAIL**  
A strong solution for short strokes.



**ROLLER GUIDES**  
Four raceways with rollers. High load capacity.



**HEAVY TELESCOPIC**  
The strongest solution for extraction.



**LIGHT TELESCOPIC**  
Telescopic systems for smooth movement. Steel and aluminium.



**BALL BEARINGS**  
Linear ball bearings and hardened steel shafts.

Every care has been taken to ensure the accuracy of the information contained in this catalogue but no liability can be accepted for any errors or omissions. Even partial reproduction is allowed only by written permission by Rolco.

**Rollco AB**  
Box 22234  
Ekvändan 3  
250 24 Helsingborg  
Sweden  
Tel. +46 42 150040  
Fax +46 42 150045  
[www.rollco.se](http://www.rollco.se)

**Rollco A/S**  
Ladegårdsvej 2  
7100 Vejle  
Denmark  
Tel. +45 7552 2666  
Fax +45 7552 0708  
[www.rollco.dk](http://www.rollco.dk)

**Rollco OY**  
Kuohuntie 2  
36200 Kangasala  
Finland  
Tel. +358 207 57 97 90  
Fax +358 207 57 97 99  
[www.rollco.fi](http://www.rollco.fi)

**Rollco Norge AS**  
Bergliveien 2  
3427 Gullaug  
Norway  
Tel. +47 32 84 00 34  
Fax +47 32 84 00 91  
[www.rollco.no](http://www.rollco.no)

**Rollco Taiwan**  
No. 28, Lane 125, Da-an Road  
Shulin District 238  
New Taipei City, Taiwan  
Tel. +886-2-8687-2726  
Fax +886-2-8687-2720  
[www.rollco-tw.com](http://www.rollco-tw.com)



**ROLLCO**  
SPECIALIZED  
ON LINEAR MOTION