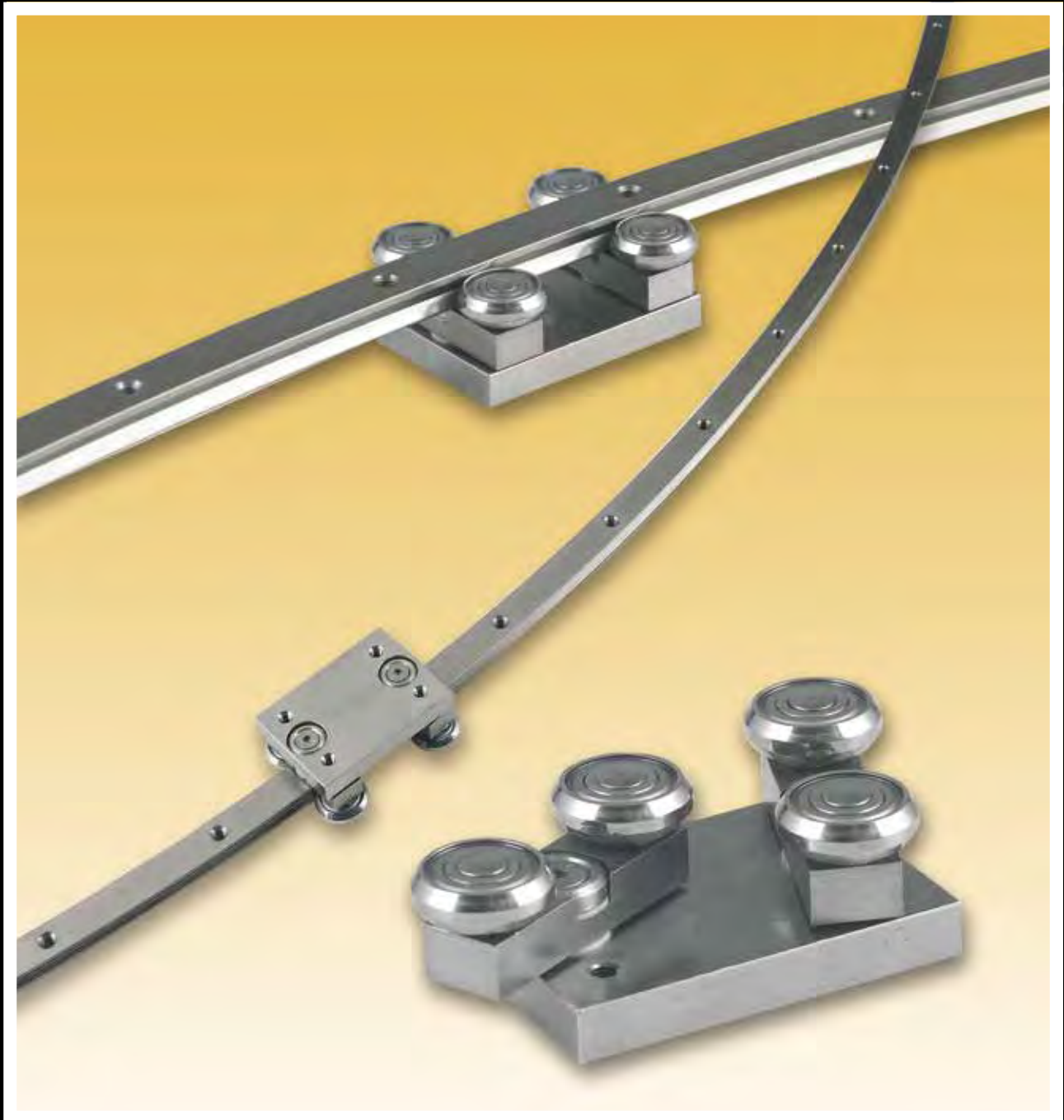


# CURVI LINE



**ROLLCO**  
SPECIALIZED  
ON LINEAR MOTION

## Index

Product explanation .....	4
Technical data .....	5
Load capacities and product dimensions .....	6
Product dimensions .....	7
Technical instructions .....	8-9
Notes .....	10
Product overview .....	11



## Linear Rails for Constant and Variable Radii

Curvi Line is a curvilinear rail used for all non-linear special movements. Rails with constant or variable radii may be specified according to customer requirements, resulting in a highly flexible, economical solution. Curviline is available in two rail widths. The use of standard radii is recommended. All non-standard rail layouts and radii are possible as custom products, however extra lead time may result.

### The most important characteristics:

- Straight and curved sections in one continuous rail is possible
- Sliders with four rollers arranged in pairs maintain the preload over the entire rail length
- Custom production according to customer requirements
- Also available in stainless steel

### Preferred areas of applications:

- Packaging machines
- Railway car interior doors
- Special extensions
- Shipbuilding (interior doors)
- Food industry



### Constant radii

The layout of CKR guide rails corresponds to a partial section of a complete circle.

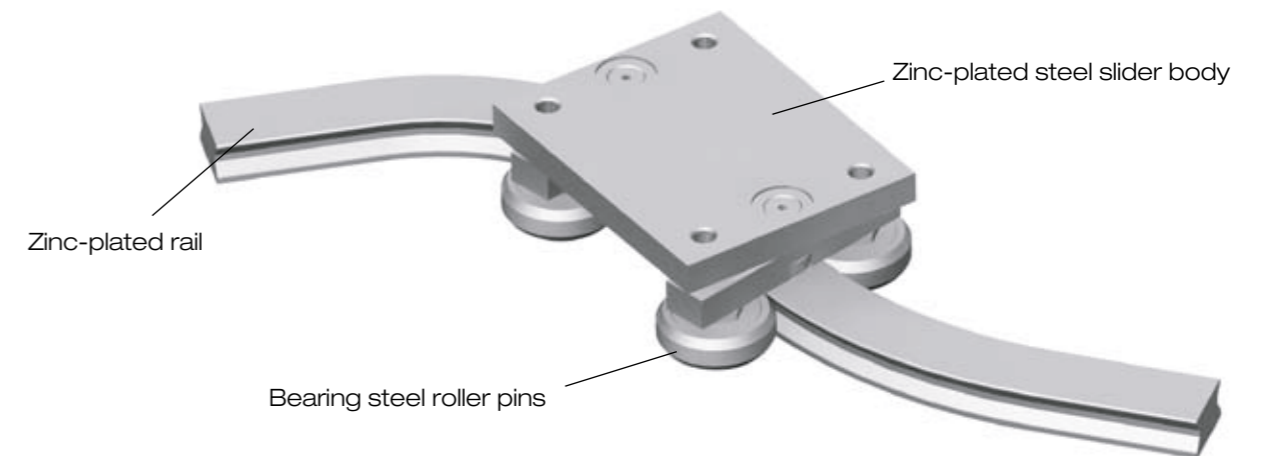
### Variable radii

CVR curvilinear rail is a variable combination of various radii and straight partial pieces.

### Slider

The carriage maintains the desired preload over the entire rail layout. Moving roller mountings and the paired application of concentric and eccentric roller pins ensures uniform running even with a complex rail layout.

## Technical data



### Performance characteristics:

- Available rail widths: CKR01/CVR01: 16.5 mm and CKR05/CVR05: 23 mm
- Max. slider operating speed on the rail: 1.5 m/s (depending on application)
- Max. acceleration: 2 m/s<sup>2</sup> (depending on application)
- Max. effective length of the rail: 3,240 mm
- Max. traverse: CCT08: 3,170 mm and CCT11: 3,140 mm
- Minimum radius for both sizes: 120 mm. For non-standard radii, please contact us.
- Radius tolerance +/- 0.5 mm, angle tolerance +/- 1°
- Temperature range: -30 °C to +80 °C (-22 °F to +176 °F)
- Rails and runner electrolytic zinc-plated and passivated, increased anticorrosive protection on request (see page 8: Anticorrosive protection)
- Rail material: C43, AISI316L for the stainless steel version
- Slider body material: Fe360, AISI316L for the stainless steel version
- Radial ball bearing material: 100Cr6, AISI440 for the stainless steel version
- Rollers are lubricated for life

### Remarks:

- With a simple adjustment of the eccentric roller (markings on bottom of roller), the slider can be set with no clearance or with desired preload
- The recommended hole pitch is 80 mm on the extended length
- Please indicate the precise rail shape and the desired hole pattern in a drawing
- Indicate if the design is a right or left version when ordering
- Composite rails are not recommended. For more information please contact us
- Resulting moment loads must be absorbed through the use of two sliders. For more information please contact us

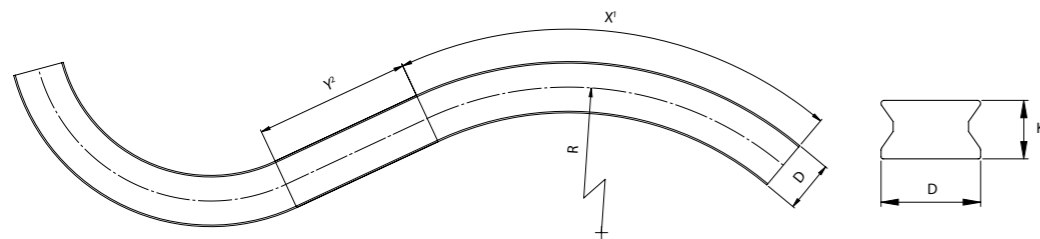
## Load Capacities



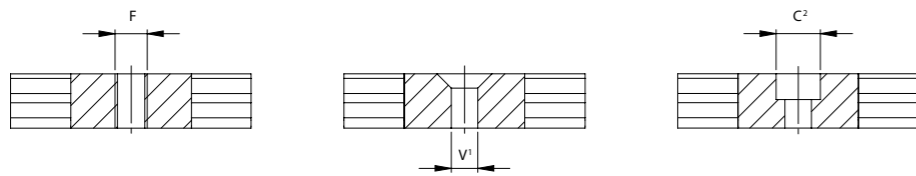
Slider type	C0ax	C0rad
CCT08	400	570
CCT11	1130	1615

Resulting moment loads must be absorbed through the use of two sliders

## Product Dimensions - Constant/Variable Rails



- 1: The max angle (X) is dependent on the radius
- 2: For curvilinear rails with variable radii, Y must be at least 70 mm



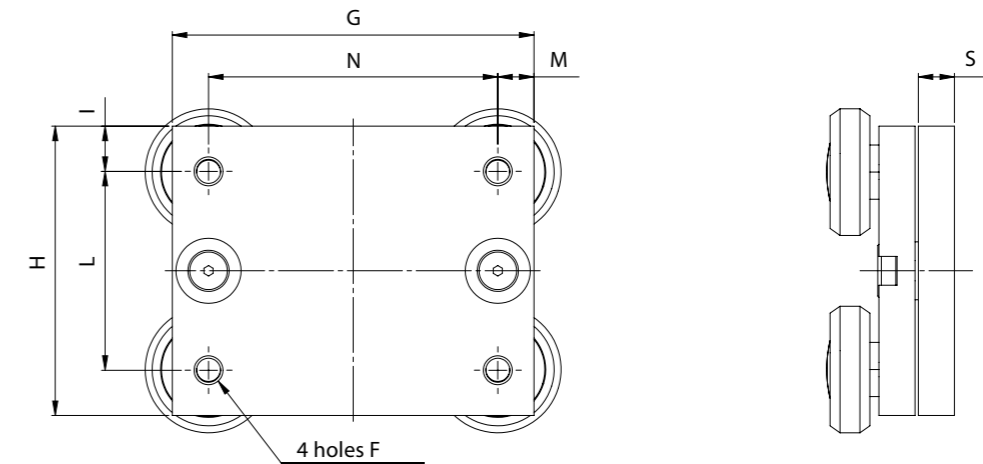
- 1: Fixing holes (V) for countersunk head screws according to DIN 7991
- 2: Fixing holes (C) for socket cap screws according to DIN 7984

Type	D	K	F	C	V	X	Standard radii	Y	Weight
	mm						mm	mm	kg/m
CKR01+CVR01	16,5	10	up to M6	up to M5	up to M5	dependant on radius	150-200-250-300-400-500-600-700-800-900-1000	min. 70	1,2
CKR05+CVR05	23	13,5	up to M8	up to M6	up to M6				2,2

Please indicate the precise rail layout and the desired hole pattern in a drawing. We recommend 80 mm on the extended length as a gage for the hole pattern.

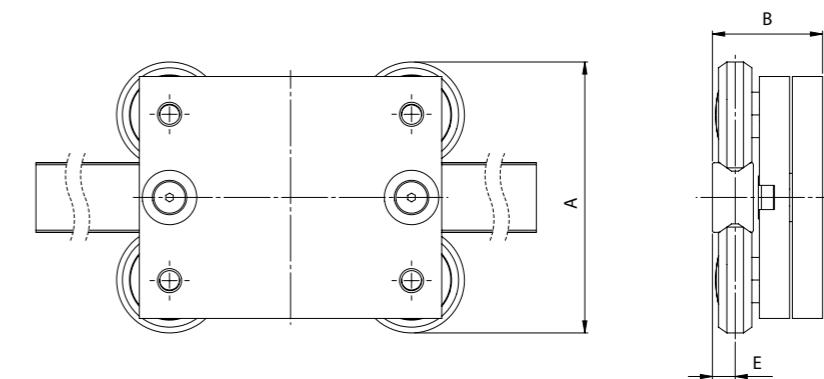
Non-standard radii are possible as special products. For more information on rail layouts, radii and hole patterns, please contact us.

## Product Dimensions - Sliders



Type	G	H	I	L	M	N	S	F	Weight
	mm								kg
CCT08	70	50	10	30	10	50	10	M5	0,45
CCT11	100	80	12,5	55	10	80	10	M8	1,1

## Product Dimensions - Mounted Sliders & Rails



Configuration	A	B	E
	mm		
CKR01-CCT08 CVR01-CCT08	60	32,3	5,7
CKR05-CCT11 CVR05-CCT11	89,5	36,4	7,5

## Technical Instructions

### Anticorrosive protection

The Curviline product family comes standard with electrolytic zinc-plating with passivation for anticorrosive protection. If increased anticorrosive protection is required, application-specific surface treatments are available on request, e.g. as nickel-plated design with FDA approval for use in the food industry. The Curviline series is also available in stainless steel. For more information please contact us.

### Roller lubrication

All rollers of the Curviline product family are lubricated for life.

### Lubrication of the raceways

The guides must be lubricated before being put into operation. Recommended lubrication intervals are heavily dependent upon the ambient conditions, speed and temperature. Under normal conditions, lubrication is recommended after 100 km operational performance or after an operating period of six months. In critical application cases the interval should be shorter. Please clean the raceways carefully before lubrication. We recommend a roller bearing lubricant with a lithium base of average consistency as a lubricant.

Proper lubrication during normal conditions:

- reduces friction
- reduces wear
- reduces the load of the contact surfaces through elastic deformations
- reduces running noise
- increases quiet running

Different lubricants for special applications are available upon request. Example: Lubricant with FDA approval for use in the food industry. For more information please contact us.

## Technical Instructions

### Setting the preload



Type	Tightening torque (Nm)
CCT08	7
CCT11	12

If the curvilinear rails are delivered as a system, the sliders are already set with no clearance. In this case the fixing screws are secured with Loctite® at the factory. If delivered separately, or if the sliders should be installed in another track, the eccentric roller pins must be readjusted. Important: The fixing screws must be additionally glued against loosening. The following points must also be observed:

- Wipe the raceways of any eventual dirt and debris.
- Slightly loosen the fixing screws of the roller mounting. The eccentric roller pins are marked on the bottom.
- Position the slider(s) at the ends of the rail.
- The special flat key provided is inserted from the side onto the hexagonal of the pin to be set.
- By turning the flat key clockwise the roller is pressed against the raceway and thus reduces the clearance. Observe that with increasing preload, the friction is also increased and thus the service life reduced.
- Hold the roller pin with the adjustment key in the desired position and carefully tighten the fixing screw. The exact tightening torque will be checked later.
- Move the slider on the rail and check the preload over the entire length of the rail. It should move easily and the slider should not have play at any location of the rail.
- Now tighten the fixing screws with the specified tightening torque, while the flat key holds the angle adjustment of the pin. A special thread in the roller pin secures the set position.

## Order Code

For order code please contact Rollco

Notes

Product Overview



**BALL SCREWS**  
High efficiency ball screws and nuts.



**LINEAR UNIT QME**  
Complete linear drive unit with ball bushings and ball screws.



**LINEAR UNIT RHL**  
Complete unit with tooth belt.



**LINEAR UNITS**  
Complete unit with ball screw or tooth belt.



**ALUMINIUM PROFILES**  
A full program of aluminium profiles and accessories.



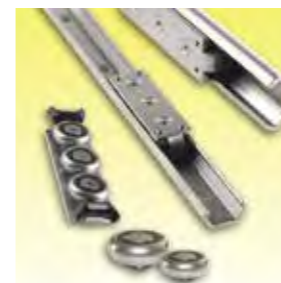
**BELT CONVEYOR**  
Transportation system with different drive options



**U-RAIL**  
Rollers in steel or polyamide. For light, standard or heavy load.



**COMPACT RAIL**  
No more problems with parallelism. Low noise. Lifetime lubricated bearings.



**C-RAIL**  
A simple and cost effective linear bearing system



**LINEAR RAIL SYSTEM**  
The most standardized linear rail system.



**MINIATURE**  
Range from 3 mm up to 15 mm.



**EASY RAIL**  
A strong solution for short strokes.



**ROLLER GUIDES**  
Four raceways with rollers. High load capacity.



**HEAVY TELESCOPIC**  
The strongest solution for extraction.



**LIGHT TELESCOPIC**  
Telescopic systems for smooth movement.



**BALL BEARINGS**  
Linear ball bearings and hardened steel shafts.

Every care has been taken to ensure the accuracy of the information contained in this catalogue but no liability can be accepted for any errors or omissions. Even partial reproduction is allowed only by written permission by Rolco.

**Rollco AB**  
**Box 22234**  
**Pinnmogatan 1**  
**250 24 Helsingborg**  
**Sweden**  
**Tel. +46 42 150040**  
**Fax +46 42 150045**  
**www.rollco.se**

**Rollco A/S**  
**Ladegårdsvej 2**  
**7100 Vejle**  
**Denmark**  
**Tel. +45 7552 2666**  
**Fax +45 7552 0708**  
**www.rollco.dk**

**Rollco OY**  
**Kuohuntie 2**  
**36200 Kangasala**  
**Finland**  
**Tel. +358 207 57 97 90**  
**Fax +358 207 57 97 99**  
**www.rollco.fi**

**Rollco Norge AS**  
**Bergliveien 2**  
**3400 Lier**  
**Norway**  
**Tel. +47 32 84 00 34**  
**Fax +47 32 84 00 91**  
**www.rollco.no**

**Rollco Taiwan**  
**No. 28, Lane 125, Da-an Road**  
**Shulin City 238**  
**Taiwan**  
**Tel. +886-2-8687-2726**  
**Fax +886-2-8687-2720**  
**www.rollco-tw.com**



**ROLLCO**  
SPECIALIZED  
ON LINEAR MOTION